

Historic Covered Bridges of Indiana County

Location and Name of a Non-existing, Historic Covered Bridge



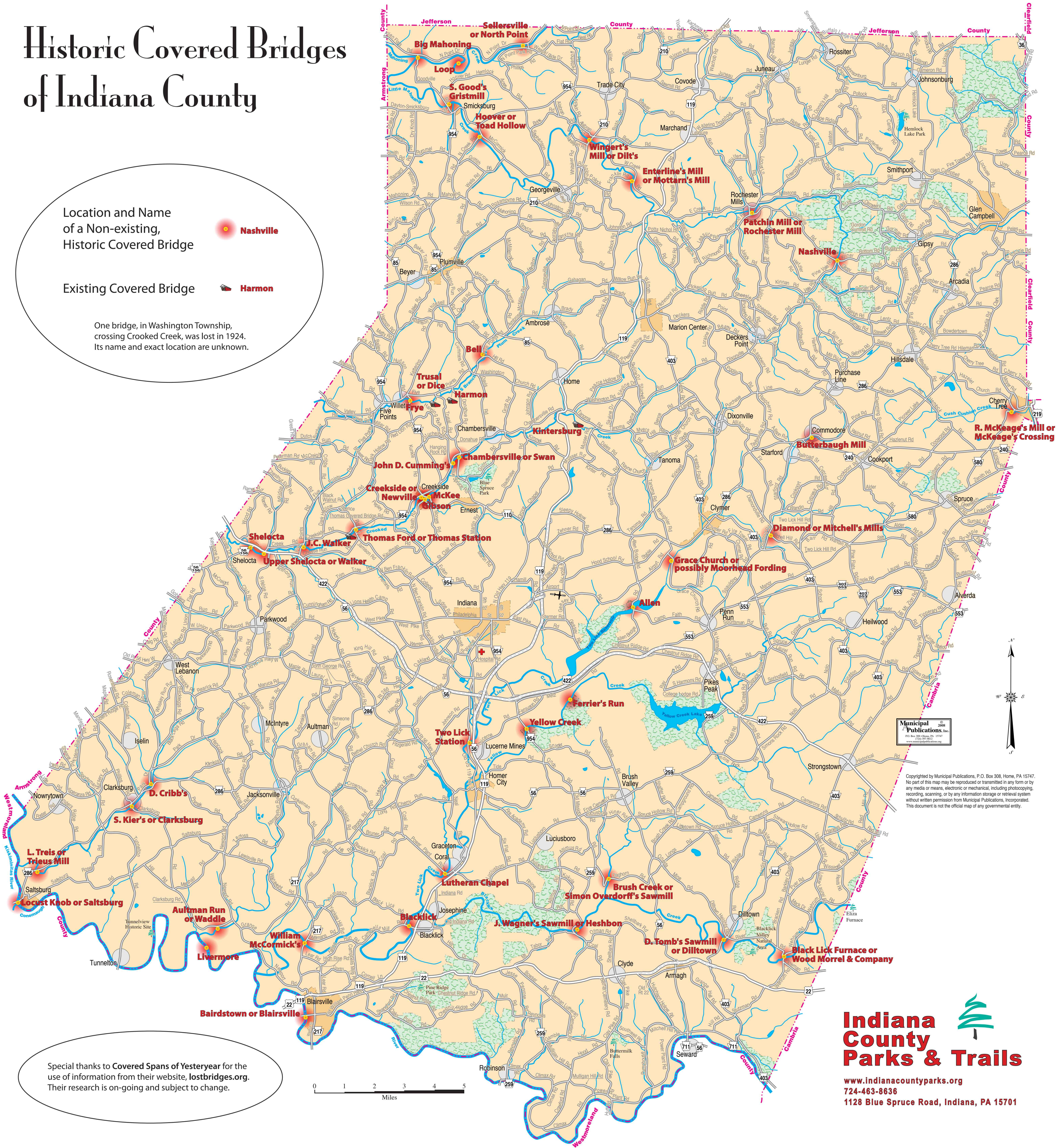
Nashville

Existing Covered Bridge



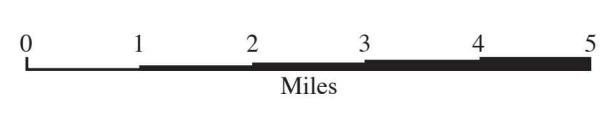
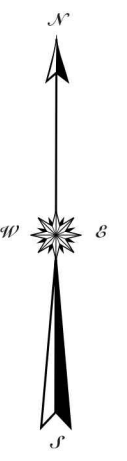
Harmon

One bridge, in Washington Township, crossing Crooked Creek, was lost in 1924. Its name and exact location are unknown.



Municipal Publications, Inc.
© 2008
1128 Blue Spruce Road, Indiana, PA 15701
www.indianacountyparks.org

Copyrighted by Municipal Publications, P.O. Box 308, Home, PA 15747. No part of this map may be reproduced or transmitted in any form or by any media or means, electronic or mechanical, including photocopying, recording, scanning, or by any information storage or retrieval system without written permission from Municipal Publications, Incorporated. This document is not the official map of any governmental entity.



Special thanks to Covered Spans of Yesteryear for the use of information from their website, lostbridges.org. Their research is on-going and subject to change.

Indiana County Parks & Trails
www.indianacountyparks.org
724-463-8636
1128 Blue Spruce Road, Indiana, PA 15701